



TBITE Quarterly

Volume 5, Issue 1

March 2007

PRESIDENT'S MESSAGE

Stacy Burgess
Carter Burgess, Inc

Greetings!!! It gives me great pleasure to serve you as this year's TBITE President. My term on the TBITE board began three years ago as Treasurer. Over these past couple of years, I've had the opportunity to meet and gain valuable relationships and be a part of planning meetings on current and interesting transportation topics for the TBITE members.

This year's first quarterly meeting was held on February 20, 2007. The Florida Department of Transportation gave a presentation and tour on the Florida Traffic Management Center. The **Florida Department of Transportation District 7 Tampa Bay SunGuide (TBSG) Center**, located at the District 7 Headquarters on McKinley Drive in north Tampa, will ultimately provide freeway management on sections of I-275, I-75, and I-4. The building has approximately 20,000 square feet of floor area and is a hardened facility, allowing operations to continue before, during, and after hurricanes or other severe incidents.

The FDOT's SunGuide Center freeway operations will also be located in the facility with Florida Highway Patrol dispatching, FDOT District Emergency Operations Center, Florida Fish & Wildlife, and FDOT Motor Carrier Compliance. The SunGuide Center's grand opening is expected this spring.

President's Message Continued...

Special thanks to Bill Wilshire, P.E, Terry Hensley and other staff members of the Department for a great presentation and tour of the TBSG Center. We also thank the TBITE members for such a great turnout at this meeting.

The continued goal of the TBITE board is to bring current "hot topics" on transportation issues to its members. We solicit your input for upcoming meetings this year and look forward to your continued participation and attendance. Thank You!

UPCOMING EVENTS

Stephen McGinley, PE
Grimail Crawford, Inc

Tampa Bay ITE Quarterly Meeting
Tentative Date: May 8, 2007

Florida Section ITE Summer Meeting
June 20-22, 2007
Naples, Florida

ITE 2007 Annual Meeting
August 5-8, 2007
Pittsburgh, Pennsylvania

ISSUE HIGHLIGHTS

1	President's Message	3	Student Chapter News
1	Upcoming Events	3	Keith Crawford Student Scholarship Fund
2	Special Election Results	4	Quarterly Meeting Photo's
2	Call for Committee Members	5	Sponsors



2007 TBITE Executive Board

PRESIDENT

Stacy Burgess, EI
Stacy.Burgess@c-b.com

VICE PRESIDENT

Elisa Powell
epowell@gc-inc.com

SECRETARY

Stephen McGinley, P.E.
smcginley@gc-inc.com

TREASURER

Oliver Rodrigues P. E.
ORodrigues@baysideng.com

PAST PRESIDENT

Rosana Correa, P.E., PTOE
rcorrea@vanusinc.com

SPECIAL ELECTION RESULTS



Oliver R. Rodrigues, P.E.
Senior Project Manager



Congratulations on being elected to the Tampa Bay ITE Executive Board. Thanks to everyone who made this the most successful election in TBITE history.

GET INVOLVED WITH TBITE!

Activities Committee

Pre-Meeting Coordinator Chairperson
Vacant

On-Site-Meeting Coordinator Chairperson
Shashi Ketu, E.I., ICON
sketu@iconconsultantgroup.com

Fundraising Committee

Vacant

Newsletter Committee

Vacant

TBITE Annual Awards Banquet

Vacant

Website Master:

Sachin Rai, E.I., CUTR
rai@cutr.usf.edu

CALL FOR COMMITTEE MEMBERS

Want to get more involved with your organization? Becoming a committee chair is a great way to do it. As noted above, multiple positions are available. We are in need of a lot of help, and it won't take up much of your time. If you would like to lend a hand please contact Stacy Burgess at stacy.burgess@c-b.com. Thanks!



STUDENT CHAPTER NEWS

Stephanie Bromfield
Secretary, USF ITE Student Chapter

The University of South Florida (USF) ITE student chapter was pleased to accept the District 10 Student Chapter award for 2006. We began 2007 with the same goals in mind, to promote the advancement of transportation and traffic engineering by fostering the close association of students with the transportation and traffic engineering profession. In January 2007, 16 ITE students took a trip to the Transportation Research Board 86th Annual Meeting in Washington D.C., 14 of which were partially or fully sponsored by the USF ITE Student Chapter through the kind donations of TBITE, FSITE, grants, fundraising, and other student chapter events. It was a first time experience for many students who were amazed at the vast yet cohesive world of transportation. While there, students also attended the 6th Annual ITE Student Member Reception at the ITE Headquarters. This was a great opportunity for students to interact with other students from across the country and the ITE board of directors.

The USF ITE Student Chapter is also continuing to team up with the USF College of Engineering and the Center for Urban Transportation Research to host the graduate transportation seminar series offered at USF. In this seminar transportation professionals, professors, students, and companies, have the opportunity to present their work on transportation research, projects and everything that has to do with transportation.



USF Students with president of ITE at the Student Member Reception in Washington D.C.



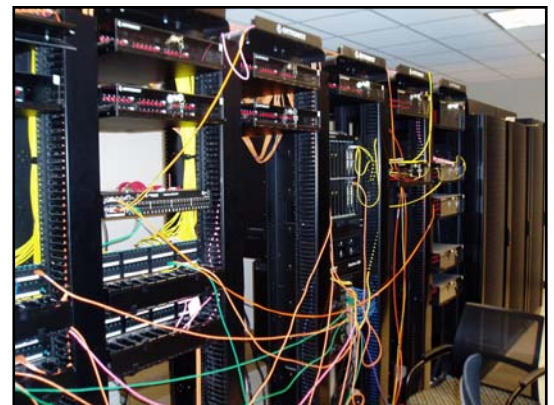
Graduate Transportation Seminar featuring Robert Dial presenting the topic *The Classic User-Equilibrium Traffic Assignment Problem: Model Formulation and Solution Algorithm*

KEITH CRAWFORD STUDENT SCHOLARSHIP FUND

Several members have inquired about making a donation to the Keith Crawford Student Scholarship fund for 2007. We would like to let you all know that anyone can make a donation to this fund and it is tax deductible. In the past we have received anonymous donations, but you can also be recognized at the annual banquet for your donations, if you so choose. Please contact the TBITE Treasurer Oliver Rodrigues at ORodrigues@baysideng.com to make a donation. Thank you!



QUARTERLY MEETING AT THE FDOT TRAFFIC MANAGEMENT CENTER





PROUD TAMPA BAY ITE SPONSORS



VANUS
ENGINEERING EVOLUTIONSM

VANUS, Inc. (VANUS) - a team of professional engineers, designers and planners with a reputation for quality performance.

From our offices in Florida and Kansas, we specialize in:

- **ITS Planning, Design and Integration**
- **Traffic Engineering**
- **Signal Design and Timing**
- **Transportation Planning**
- **Communications Planning and Design**

Jay H.L. Calhoun, PE, President

4350 West Cypress Street, Suite 340 • Tampa, FL 33607
Phone: (813) 831-8870 • Fax: (813) 831-9375 • www.vanusinc.com

DKS Associates
TRANSPORTATION SOLUTIONS

- ◆ Traffic Engineering
- ◆ Transportation Planning
- ◆ Parking
- ◆ Traffic Signal Design
- ◆ Traffic Control Systems
- ◆ Intelligent Transportation Systems
- ◆ Lightning Protection

12000 N. Dale Mabry Hwy
Suite 112
Tampa, FL 33618
Tel: (813) 962-5959
www.dksassociates.com

Jerry Wentzel, P.E.
Regional Manager

Other DKS Associates Offices Throughout the United States

TBITE SPONSORSHIP OPPORTUNITY

ADVERTISE IN TBITE NEWSLETTER

Advertise your business or job postings in TBITE Quarterly Newsletter. Advertising space is available at \$50 per issue or \$150 for the year. The Newsletter is published the last week of March, June, September, and December of each year. For more information please contact any of the board members.

TBITE STUDENT SPONSORSHIP

The University of South Florida has a very active student chapter of ITE. We'd like to invite them all to be part of the TBITE family as well, but we need your help. You or your firm can sponsor a student for \$75 per year. This will cover the cost of student attendance at each TBITE meeting as well as the Annual Banquet. For more information please contact any of the board members.

Please contact Steve McGinley at (smcginley@gc-inc.com), or Stacy Burgess at (Stacy.Burgess@c-b.com) with ideas or suggestions for the next TBITE Quarterly!